

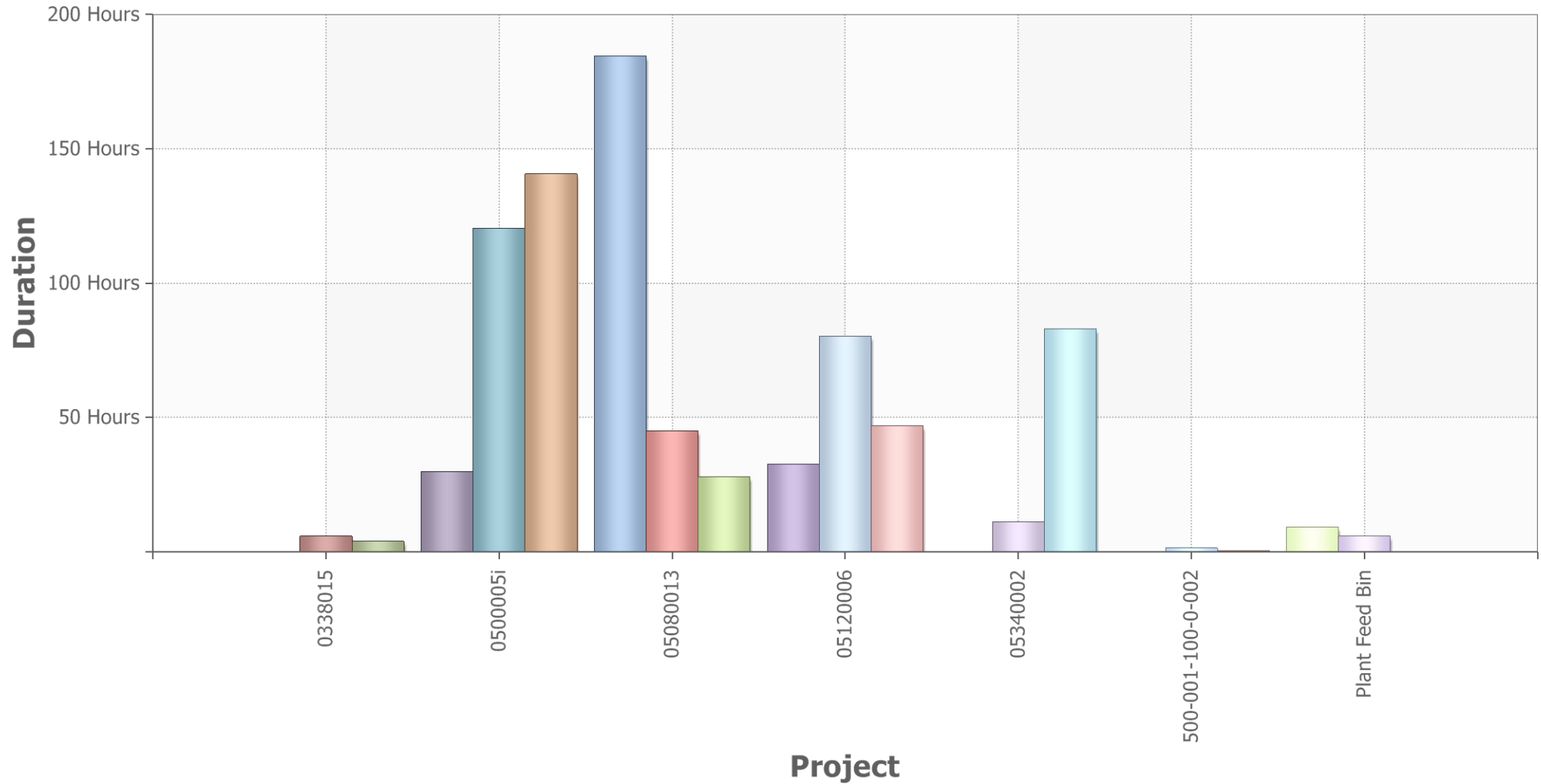


TimeLog Explorer Project Chart Report per Month

ReportDescription

This report and chart display the duration summary for the selected projects per month for the specified time range (January - March)

January 21, 2010 to February 10, 2010



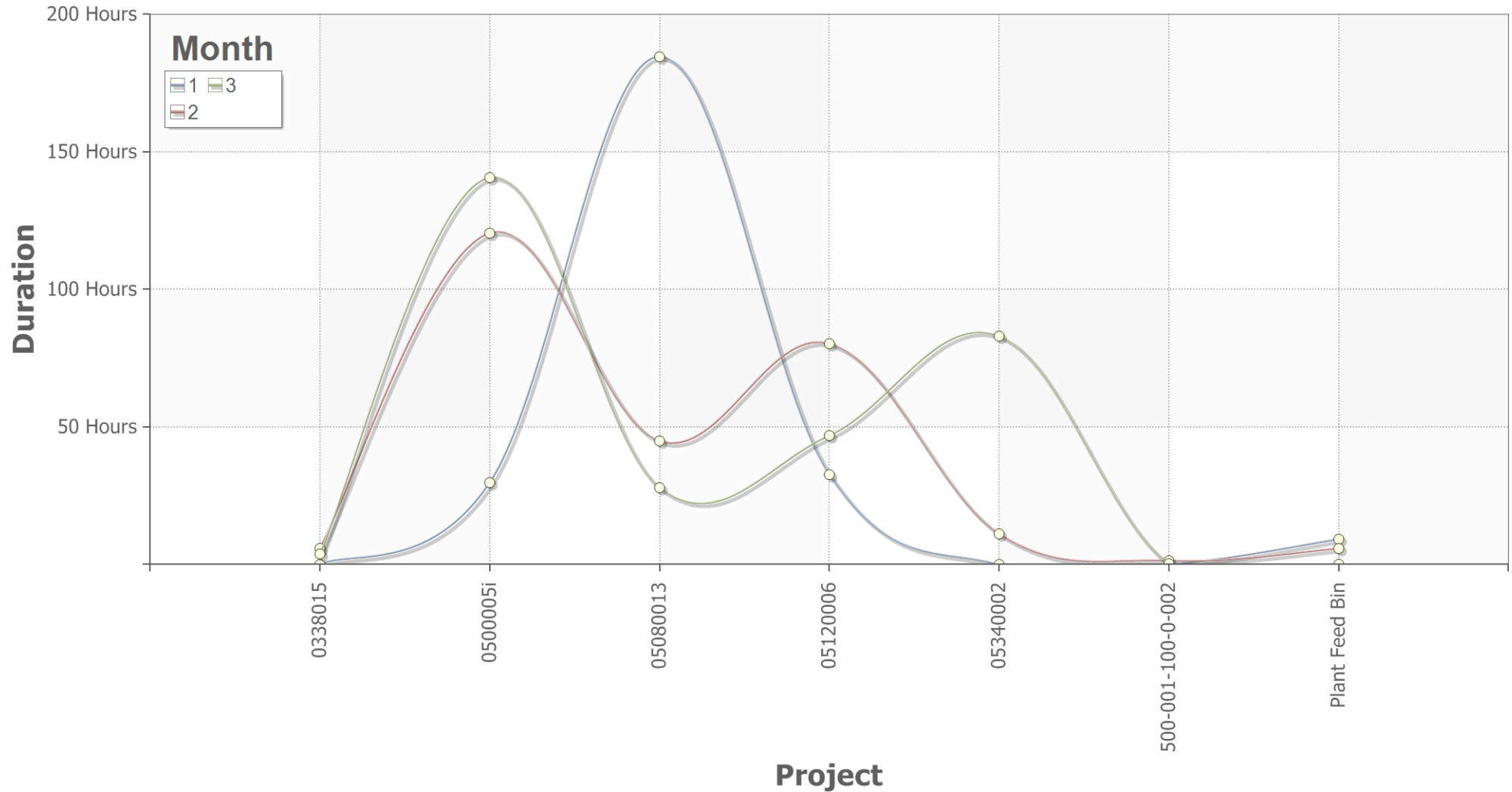


TimeLog Explorer Project Chart Report per Month

ReportDescription

This report and chart display the duration summary for the selected projects per month for the specified time range (January - March)

January 21, 2010 to February 10, 2010





TimeLog Explorer Project Chart Report per Month

ReportDescription

This report and chart display the duration summary for the selected projects per month for the specified time range (January - March))

January 21, 2010 to February 10, 2010

Year 2010	Month1			
Project	Year	Month	Time	
0338015	2010	1	0.018h	
Plant Feed Bin	2010	1	9.194h	
0500005i	2010	1	29.758h	
05120006	2010	1	32.666h	
05080013	2010	1	184.521h	
Year 2010	Month2			
Project	Year	Month	Time	
500-001-100-0-002	2010	2	1.365h	
Plant Feed Bin	2010	2	5.811h	
0338015	2010	2	5.847h	
05340002	2010	2	11.164h	
05080013	2010	2	44.906h	
05120006	2010	2	80.248h	
0500005i	2010	2	120.436h	
Year 2010	Month3			
Project	Year	Month	Time	
Plant Feed Bin	2010	3	0.067h	
500-001-100-0-002	2010	3	0.291h	
0338015	2010	3	3.835h	
05080013	2010	3	27.929h	

05120006	2010	3	46.863h
05340002	2010	3	83.016h
0500005i	2010	3	140.620h